

TERMINAL UNITS

BM terminal unit

Terminal units for medical gases designed for rapid connections without risk of fluid inversion.



BM Terminal unit



High degree of safety

- Patented single block design with no risk of fluid inversion caused by defective assembly.
- Impossible to unlock nozzle while in use.
- Does not contain substances likely to give off toxic gases in case of fire.

Easy maintenance

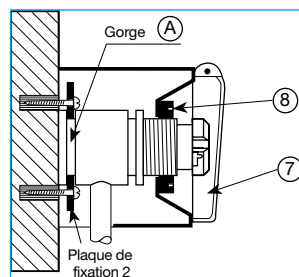
- No interruption in gas supply for maintenance.
- Only one single sub-assembly (the filter valve end guide) needs replacing. A single step is enough for making this replacement.
- Easy traceability thanks to the date of manufacture (of filter valve nozzle guide) engraved on front panel.

Rapid installation

Ready-to-assembly single block outlet.

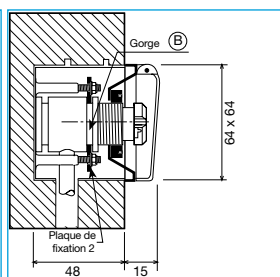
3 types of assembly

Surface mounted:



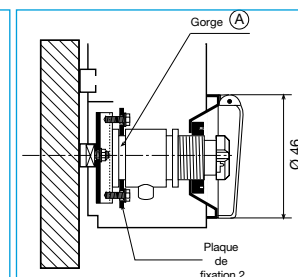
Mounting plate in groove A

Flush mounted:



Mounting plate in groove B

Trunking mounted:



Mounting plate in groove A

Composition

A complete terminal unit consists of the following components:

- 1 outlet (to be chosen according to the gas used),
- 1 box (to be chosen according to the type of mounting),
- 2 labels to be chosen according to the gas used.

A hinge plate (cover) is supplied with the connector housing.

Features

Gases: O₂, medical Air, N₂, CO₂, N₂O, O₂/N₂O, vacuum.

Nominal operating pressure: 3 - 5 bar for gases, - 0.6 bar for vacuum.

Max. pressure: 10 bar.

Inlet connector: Ø 10 copper tube.

Weight: outlet body 290 g, surface box 200 g, flush box 180 g, trunking box 140 g.

Constituent materials: body in chromium plated brass, end guide in nickel plated brass, table hinge plate in Zamack.

Table hinge plate dimensions: 64 mm (l) x 64 mm (L).

Type of mounting: surface, flush or trunking mounted according to box.

60 µm filter for gases and 350 µm filter for vacuum.

Weight of magnetic materials: 26.1 g.

CE 0120 class IIa.

Cleaning

Cleaning: clean with rag lightly soaked in soap water and rinse in clean water.

Disinfection: with an alcohol-based solution (spray or towelettes),

with an EC-certified alcohol-based solution (Surfanios type).

Do not immerse device.

Upkeep and maintenance

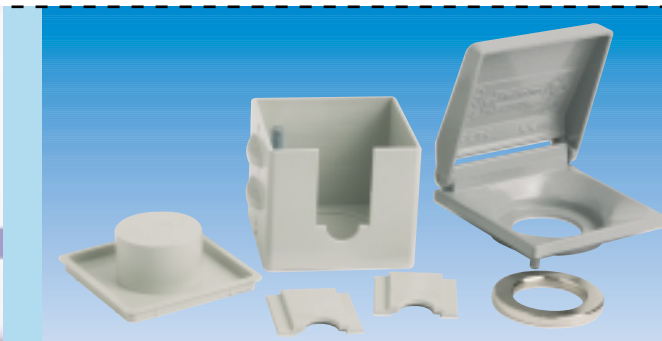
Replacement of filter valve end guide filter once every year in case of heavy use (operating table, wake-up rooms, intensive care, emergency life support); once every 2 years for other services.

TERMINAL UNITS

BM terminal unit



Vacuum BM terminal unit trunking mounted



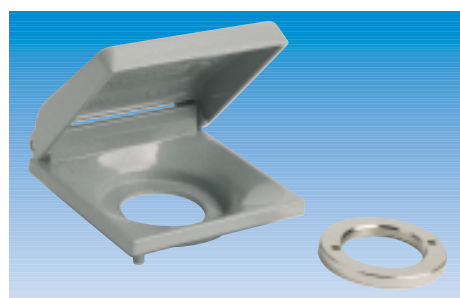
Flushed BM box



BM medical outlet



Surface BM box (64 x 64 x 45)



Trunking BM box

references

BM outlet (to be chosen according to the gas supplied):

Type	Reference	Designation	Gas	Contents
NF	BM000100	BM MEDICAL OUTLET	O ₂	1, 2, 4, 9 and 10
	BM000200	BM MEDICAL OUTLET	Vacuum	
	BM000300	BM MEDICAL OUTLET	Air	
	BM000400	BM MEDICAL OUTLET	N ₂ O	
	BM000500	BM MEDICAL OUTLET	N ₂	
	BM000800	BM MEDICAL OUTLET	CO ₂	
	BM005000	BM MEDICAL OUTLET	AIR-800	

references

Connector housing (to be chosen according to type of mounting):

Reference	Designation	Mounting	Contents
BM001000	BM BOX	Flushed	6, 7 and 8
BM001100	BM BOX	Surface	5a, 7 and 8
BM001200	BM BOX	Trunking	7 and 8
BM001300	BM BOX	Surface (reduced)	5b, 7 and 8
BM001400	BM BOX	Special trunking	5c, 7 and 8

references

Connector label to be chosen according to the gas supplied (2 per connector):

Reference	Designation	Gas
YF020400	BM LABEL	O ₂
YF020500	BM LABEL	Vacuum
YF020600	BM LABEL	Air
YF020700	BM LABEL	N ₂ O
YF020800	BM LABEL	N ₂
YF021100	BM LABEL	CO ₂
YF154700	BM LABEL (x10)	AIR-800
YF023900	BM LABEL	Vacuum



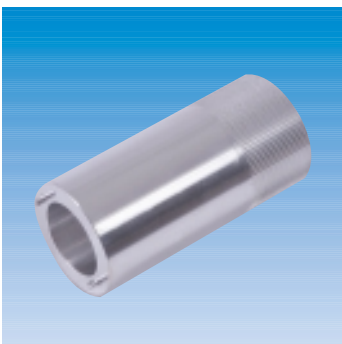
Surface BM box reduced (64 x 64 x 43)



Special trunking BM box (64 x 64 x 13)



Filter valve end guide



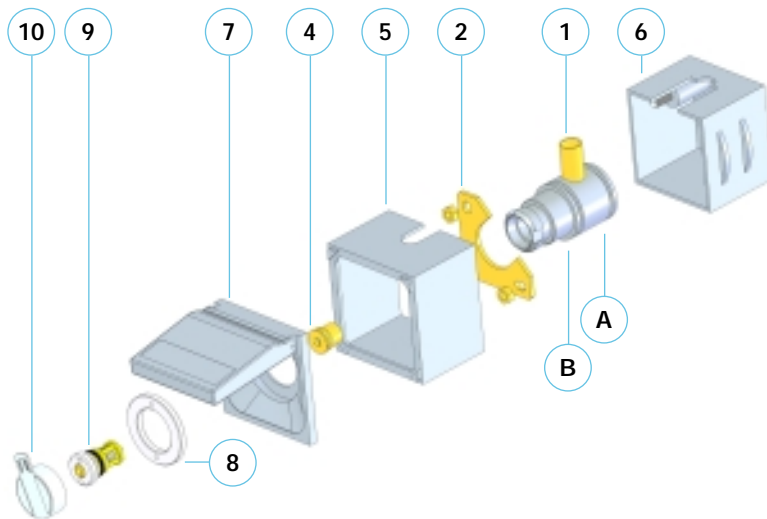
Spanner for BM outlet nut



Filter valve end guide key

spare parts

Reference	Designation	Gas	
Not sold separately	Outlet body		1
Not sold separately	Fixing plate	All gases	2
BM050800	Outlet base valve	All gases (except vacuum)	4
BM050900	Outlet base valve	Vide	4
BM050200	Box for surface mounting	All gases	5
Not sold separately	Box for flush mounting	All gases	6
BM001200	Hinge with cover and nut (box for trunking mounting)	All gases	7 and 8
BL050100	Nut	All gases	8
BM055100	Ø 6 filter valve end guide (x 10)	O ₂ /N ₂ O	9
BM055200	Ø 7 filter valve end guide (x 10)	O ₂ , Air, N ₂ O, CO ₂	9
BM055300	Ø 8 filter valve end guide (x 10)	N ₂ , O ₂ /CO ₂	9
BM055400	Ø 8 filter valve end guide (x 10)	Vacuum	9
BM051600	filter valve end guide (x 10)	AIR-800	9



tool kit

Reference	Designation
YA003900	Spanner for BM outlet nut
YA004400	Filter valve end guide key (all gases)
Not sold separately	5 mm allen key for base valve

Disassembly, assembly and maintenance should be performed by technicians trained according to procedures described in the maintenance manual. Use only genuine spare parts.