



Patient compliance

- Using machine counters
- Using the Bora software

For exact, clear, and quick follow up of the patient

Comfort

- Dust and pollen filters

Easy to replace, prevent allergic reactions

- Ramp
- Pressure stability



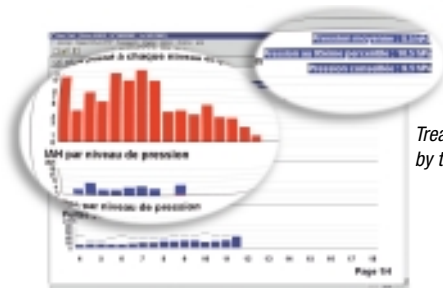
Detailed compliance thanks to the Bora software

The Bora software produces different reports :

- patient compliance
- treatment session by session
- on the globale period
- or on a parametrable one, for autotitration (3 screens)

Residual event details

	Index sur,
Apnées obstructives	0,0
Apnées	0,0
Apnées centrales	0,0
Saturations	0,7
Fuite moyenne	0,7 l/min - 0,04
Moyenne de nombre de respirations respiratoires	7,9
Limite de débit	4,2 %
Humidité	0,5 %
Pression moyenne	4,8 cmHg - 0,7
Pression de 30 paramètres	0,0 cmHg
Pression	0,0 cmHg



Treatment pressure recommended by the machine

Pressure dispersion details and AHI for each pressure level

Taema

Characteristics of the Bora range

Dimensions	120 x 180 x 273 (HxWxL)	Pressure	4-18hPa
Weight	2.4 kg	Pressure steps	0.5hPa
Noise level	< 30 db	Ramp	0-40 mn
Keypad	Five keys, rear-lit	Ramp steps	5 mn
Power supply	230V/24V - 110V/24V - 100V/24V	Autotest	Systematic

Specifications

	BORA	BORA C	BORA ADAPTEC
Mode	CPAP	CPAP	Auto CPAP/CPAP
Auto-titration	-	-	Yes
Pressure regulation	-	proximal	proximal
Automatic ON/OFF	-	Yes	Adjustable
Settings protection by code	Treatment pressure	Treatment pressure	Settings/Compliance
Adjustable start-up pressure	-	-	Yes
Automatic altitude compensation	-	Yes	Yes
Automatic leak compensation	-	Yes	Yes
Date and time	-	Yes	Yes
Delivery pressure displayed	-	Yes	Yes
Patient compliance	Timers	Times and PC soft	Timers and PC soft
Timer (operational time)	Yes	Yes	Yes
Total operational time	Yes	Yes	Yes
Leakage period time	-	Yes	Yes
Patient respiratory event timers	-	-	Yes
Software compliance :			
Daily compliance data	-	Yes	Yes
Respiratory event	-	-	Detailed
Reports	-	compliance	Auto-titration / compliance
Remote control	Option	Option	-
Patient circuit	Option	Yes	Yes
Carrying bag	Option	Option	Option

Accessories

	BORA	BORA C	BORA ADAPTEC
Model CE 230V	KC 020700	KC 020800	KC 021600
Model CE 110V	KC 022800	KC 022800	KC 022800
Model CE 100V	KC 022300	KC 022300	KC 022300
Bora Software	KC 022400	KC 022400	KC 022400
Humidifier : Humidys N	KC 022000	KC 022000	KC 022000
Heating humidifier: Humidys + N	KC 022100	KC 022100	KC 022100
Remote control	KC 020900	KC 020900	KC 020900
Transportation bag	KF 006400	KF 006400	KF 006400
Patient circuit	KT 600700	KT 600700	KT 600700
Pollen filter (x 100)	KY 539500	KY 539500	KY 539500
Dust filter (x 50)	KY 539400	KY 539400	KY 539400
PC connection cable	YR 144100	YR 144100	YR 144100
C5 nose mask	Small: KM 205000	Med.: KM 201000	Large: KM 252000

Taema is an activity of AIR LIQUIDE Santé International

AIR LIQUIDE Santé: One mission, one ethic, one ambition.

In over 40 countries, the mission of the AIR LIQUIDE Santé

associates is to contribute towards improving the care provided to patients, in hospital and at home.

Their ethic is to provide constant attention to the sick and assistance to those caring for them.

Their ambition is promote the development of the AIR LIQUIDE group in the healthcare industry.



TAEMA, 6 Rue Georges Besse - CE 80 - 92182 ANTONY CEDEX - FRANCE

Tel.: 33 (0)1 40 96 66 00 - Fax: 33 (0)1 40 96 67 00

www.taema.fr

www.taema.com



Taema



BORA range



Bora C

Performance and compliance



Bora ADAPTEC[®] Pioneering inspiration



Bora

Simplicity and reliability

BORA :

A complete range

CPAP : BORA, BORA C

- **Compact and light**, Bora and Bora C combine style and portability. They integrate perfectly into the patient's life. They have been designed to high standards of **reliability** and **safety**.

Simplicity

- Digital display
- Intuitive menus
- Automatic Start/Stop activated by detection of patient activity

User friendly

- Stylish design
- Light and compact (easily transportable)
- Quiet in operation (to help the patient fall asleep quickly and easily)



Auto CPAP : BORA

■ **Respiratory events are anticipated**

Bora Adaptec anticipates "Major" respiratory events, while keeping delivery pressure to a minimum.

To do this, any obstruction likely to become pathological is immediately treated.

■ **Reliable pressure adjustment**

Designed for this performance, the Adaptec algorithms:

- detect central apnoeas to prevent the machine from reacting to non-obstructive events,
- prevent pressure rise during awakening.

■ **Easy settings**

Minimum, maximum, and start-up pressures: Pmin, Pmax, and Pini.

Bora Adaptec also offers advanced parametering that allows refined treatment strategy for still better patient adaptation.

■ **Automatic titration**

Using the recording and analysis of pressure variations and dispersions, average pressure and typical variation for each session, over a defined period, Bora Adaptec recommends a treatment pressure and provides the information necessary for medical prescription.

patient's everyday environment.

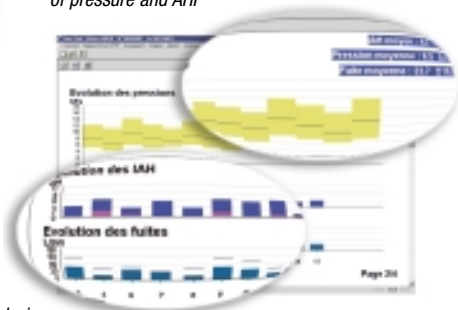


Bora



Bora Adaptec®

Session by session development of pressure and AHI



complete leak analysis.

Developed by TAEMA in close collaboration with the patient, ADAPTEC ensures the pressure level that is suited to an efficient automatic pressure adjustment, ensuring maximum comfort to the patient.

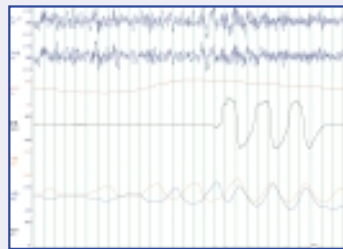
■ **Exact patient flow rate display**

Thanks to the newly patented technology, ADAPTEC ensures an exact flow rate display and a precise fluctuation analysis.

■ **Exact detection of hypopneas, obstructive apneas**

ADAPTEC's exclusive patented algorithms allow the identification of these events.

■ **Respiratory response detection**

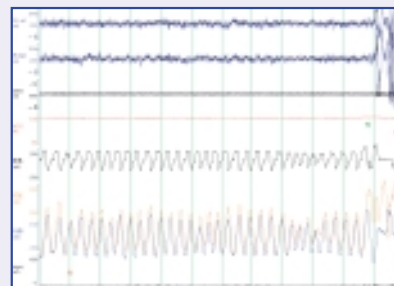


Sharp increases in flow rate, giving a good illustration of the respiratory response.

■ **Detection and analysis of pathological flow limitations**

To forestall respiratory events, Bora Adaptec treats pathological flow limitations. Pressure is thus perfectly adapted to the patient's needs, avoiding a too high a pressure level.

To do this, the patented algorithm...



Flow rate limitations that create respiratory events (which end with a respiratory event).

A pressure adjustment algorithm designed to accompany the patient's needs.

- The beginnings of an obstruction, which amount to a pressure increase of 1 hpa to stop more serious events occurring.
- "Major" events: obstructive apnoea, hypopneas, and obstructive events are detected and treated immediately.
- If there is no event, pressure reduction is progressive.

Scientific references:

1- I. Ayappa & al. "Cardiogenic Oscillations on the Airflow Signal During Obstructive Sleep Apnea". *Chest* 1999; 116:660-666
 2- R. P. Lemke & Al. "Use of a Magnified Cardiac Airflow Oscillation to Detect Obstructive Sleep Apnea". *Chest* 1996; 110:1537-1542.
 3- I. Ayappa, D Rapoport & al. "Non-Invasive Detection of RERAs". *SI*

Technology : Pioneering inspiration

In the medical world, ADAPTEC technology determines automatically controlled treatment of OSAS that gives maximum

exactly reconstitutes the patient's flow rate for optimum

Apnoeas, and central apnoeas

Identification of central apnoeas.

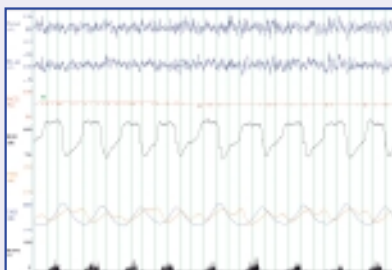
rate (such as respiratory response) are detected, of sleep quality.

Limitations

as obstructions at its beginning but only when they become to the prevention of major events, without having

Adaptec algorithms detect :

Immediate awakening
(response)



Flow limitations with snoring
(Associated with light snoring)

Modulate sleeping situations

"pathological" flow rate limitations, cause a pressure rise

strong snoring, trigger a rapid pressure rise, which stops

(0.5 hpa) to conserve the quality of the sleep attained.

Using Continuous positive Airway Pressure as a Marker of Central

to Classify Neonatal Apnea". Am. J.Respi. Crit. Care Med. Vo1154,

leep, vol. 23, No 6, 2000