

LAGOON™ Vacuum Regulator

New generation vacuum regulator for precise control of suction pressure from a vacuum outlet.

Taema bringing innovation to health care.



selection
observeurdesign06



Full range

- **LAGOON™ 250 20 L:** low vacuum pressure, high flow-rate
- **LAGOON 250:** low vacuum pressure, high flow-rate
- **LAGOON 600 and 1000:** high vacuum pressure, high flow-rate
- Jar can be disinfected cold (blue jar)
- Jar can be autoclaved at 134°C (yellow jar)

Safety and hygiene

Safety jar fitted with a reverse-flow prevention system to protect the network.

Easy-to-change low-cost bacteriological filter.

LAGOON 250 and 250 20L models have a safety relief valve which limits vacuum pressure to -240 mbar for use in paediatrics or in any procedure which requires low vacuum pressure.

Characteristics

Service: medical vacuum

Adjustable vacuum pressure: 0 to -200, 0 to -500 or 0 to -800 mbar, depending on model.

Maximum flow-rate: 20, 45 or 65 l/min, depending on model

Maximum inlet vacuum pressure: -950 mbar

Vacuum gauge accuracy: 2.5% of full scale.

LAGOON™ 250 and 250 20L safety relief valve: -240 mbar

Dimensions: 233 (H) x 105 (W) x 125 (D) mm

Weight: 550 g

Storage temperature: -40°C to +60°C

Operating temperature: -18°C to 50°C

Humidity (storage and operation): 40% to 70%

CE 0459 mark - class IIa

Easy to use

Simple to connect using the revolutionary **EASYCLIC** fitting (NF standard models).

Quick-fit jar - no need to tighten.

High-speed vacuum pressure adjustment button

On/Off button allows unit to be started and stopped instantly without losing settings.

Rugged design

Protective shell fully surrounds the vacuum gauge.

Hygiene

Clean with soapy water and rinse with clean water..

Disinfect with CE-marked Amphospray 41, Wip'anios or Anioxyde 1000 (Anios) solution.

Yellow safety jars can be autoclaved - autoclavable at 134°C for 18 minutes.

Caution:

Do not use abrasive powder or other abrasive products.

Never immerse the unit in water.

Servicing and maintenance

Change the bacteriological filter every 2 to 4 days (depending on use) and for each new patient.

Check operation once a year.

Parts do not need to be changed under preventive maintenance during the service life of the equipment (10 years)

Very easy to repair: the vacuum gauge or the On/Off slide valve can be changed quickly.



LAGOON with EASYCLIC connector for NF standard fittings



LAGOON 250 20 L



LAGOON 250



Direct vacuum valve (NF standard)



Bacteriological filter

Models available

Standard	Part no.	Description	Safety jar	Range	Maximum flow-rate	Gas	Inlet connection
	FB024100	LAGOON 250 20L	Cold disinfectable	0-200 mbar	20 l/min	Vacuum	NF
	FB023100	LAGOON 250 20L	Autoclavable at 134°C	0-200 mbar	20 l/min	Vacuum	NF
	FB029100	LAGOON 250 20L	Cold disinfectable	0-200 mbar	20 l/min	Vacuum	NF and rail mounting
	FB030100	LAGOON 250 20L	Autoclavable at 134°C	0-200 mbar	20 l/min	Vacuum	NF and rail mounting
	FB023800	LAGOON 250	Cold disinfectable	0-200 mbar	45 l/min	Vacuum	NF
	FB022800	LAGOON 250	Autoclavable at 134°C	0-200 mbar	45 l/min	Vacuum	NF
	FB028800	LAGOON 250	Cold disinfectable	0-200 mbar	40 l/min	Vacuum	NF and rail mounting
	FB029800	LAGOON 250	Autoclavable at 134°C	0-200 mbar	40 l/min	Vacuum	NF and rail mounting
	FB023900	LAGOON 600	Cold disinfectable	0-500 mbar	65 l/min	Vacuum	NF
	FB022900	LAGOON 600	Autoclavable at 134°C	0-500 mbar	65 l/min	Vacuum	NF
	FB028900	LAGOON 600	Cold disinfectable	0-500 mbar	50 l/min	Vacuum	NF and rail mounting
	FB029900	LAGOON 600	Autoclavable at 134°C	0-500 mbar	50 l/min	Vacuum	NF and rail mounting
	FB024000	LAGOON 1000	Cold disinfectable	0-800 mbar	65 l/min	Vacuum	NF
	FB023000	LAGOON 1000	Autoclavable at 134°C	0-800 mbar	65 l/min	Vacuum	NF
	FB029000	LAGOON 1000	Cold disinfectable	0-800 mbar	50 l/min	Vacuum	NF and rail mounting
	FB030000	LAGOON 1000	Autoclavable at 134°C	0-800 mbar	50 l/min	Vacuum	NF and rail mounting
DIN	FB025100	LAGOON 250 20L	Autoclavable at 134°C	0-200 mbar	20 l/min	Vacuum	DIN
	FB024800	LAGOON 250	Autoclavable at 134°C	0-200 mbar	45 l/min	Vacuum	DIN
	FB024900	LAGOON 600	Autoclavable at 134°C	0-500 mbar	65 l/min	Vacuum	DIN
	FB025000	LAGOON 1000	Autoclavable at 134°C	0-800 mbar	65 l/min	Vacuum	DIN
BS	FB026100	LAGOON 250 20L	Autoclavable at 134°C	0-200 mbar	20 l/min	Vacuum	BS
	FB025800	LAGOON 250	Autoclavable at 134°C	0-200 mbar	45 l/min	Vacuum	BS
	FB025900	LAGOON 600	Autoclavable at 134°C	0-500 mbar	65 l/min	Vacuum	BS
	FB026000	LAGOON 1000	Autoclavable at 134°C	0-800 mbar	65 l/min	Vacuum	BS
CM Spain	FB027100	LAGOON 250 20L	Autoclavable at 134°C	0-200 mbar	20 l/min	Vacuum	CM (Spain)
	FB026800	LAGOON 250	Autoclavable at 134°C	0-200 mbar	45 l/min	Vacuum	CM (Spain)
	FB026900	LAGOON 600	Autoclavable at 134°C	0-500 mbar	65 l/min	Vacuum	CM (Spain)
	FB027000	LAGOON 1000	Autoclavable at 134°C	0-800 mbar	65 l/min	Vacuum	CM (Spain)

0/-200 mbar = 0/-150 mmHg

0/-500 mbar = 0/-375 mmHg

0/-800 mbar = 0/-600 mmHg

LAGOON™ vacuum regulator



Safety jar
cold disinfectable

Safety jar
autoclavable at 134°C

Replacement parts

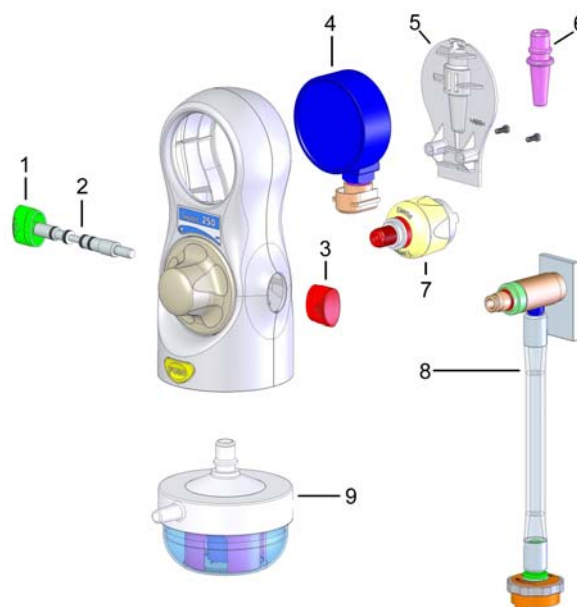
Accessories and consumables

Part no.	Description	Ref.
FB077800	Jar (cold disinfectable)	9
FB078000	Jar (autoclavable at 134°C)	9
FY000700	Bacteriological filter (x 100) for autoclavable jar	
FB079100	EN rail mounting	
FB072900	Safety nozzle	6
FC000200	Direct vacuum valve (NF standard)	
CK012100	ASPAL suction for NF standard O ₂ connector	
CY010100	Wrench	
CY010200	Wrench	
FA090200	Plastic rail mounting	

Replacement parts

Part no.	Description	Ref.
FB074500	LAGOON 250 vacuum gauge	4
FB074400	LAGOON 600 vacuum gauge	4
FB074300	LAGOON 1000 vacuum gauge	4
FB072100	Back plate	5
FB078900	On/Off slide valve assembly	1 2 3
BJ030000	EASYCLIC inlet connector assembly	7
FB079100	Mounting to NF standard rail	8

The equipment must always be installed, opened or maintained by trained personnel.
Always use original parts.



V1.0 03/2007